

DEBURRING & FINISHING  
**ORIGINAL ROUND BOWLS**



**Model: OR-3**



# ORIGINAL ROUND BOWLS



The Original Round Bowl (OR Series) is the only round bowl series in the ALMCO product line that can be fitted with dividers. The dividers provide multiple compartments and allow spaced sections for individual parts handling, preventing part-on-part contact and eliminating the need for fixturing. The curved polyurethane-lined bowl keeps parts immersed in mass to give either gentle or aggressive deburring, and the urethane drain plates and constant spray system keeps parts clean while rotating in the bowl. These machines work best for batch processing where parts are to be discharged onto an external screener for separation.

When parts and abrasive media are placed into the flat bottom bowl, its vibrating action causes millions of small collisions between parts and media, resulting in the removal of material along part edges and corners. A mixture of water and finishing compound washes away residual particles, resulting in a clean, smooth finish. Parts are loaded and unloaded from the rotating mass without stopping the machine.

### Standard Features:

- Wet or dry processing capabilities
- Space-saving, low-profile design for easy load and unload
- Curved polyurethane-lined bowl for maximum finishing action
- Variable speed motor for process flexibility

### Options:

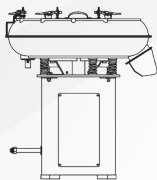
- Automatic lubrication system
- Flowmeter
- Carousel and dividers
- Tachometer
- Air-operated discharge door
- Robust sound hood
- UL 508A electrical controls



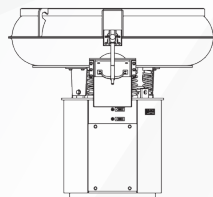
**Dividers**



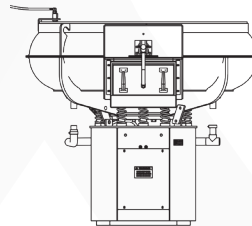
**Sound Hood**



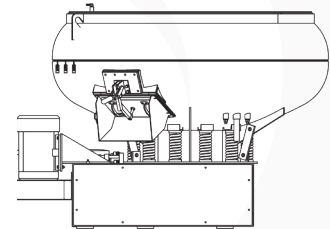
**OR-3**



**OR-5**



**OR-10**



**OR-23**

Specifications				
Model	Working Capacity (Cu Ft.)	Channel Cross Section (In)	Drive HP	Overall Dimensions (In)
OR-3	2.4	8.25	2	53 x 36 x 40
OR-5	4.5	10	3	57 x 45 x 40
OR-10	8.1	12.5	5	69 x 53 x 49.5
OR-20	17	17.25	10	80 x 60 x 52.5
OR-23	22.8	19	10	80 x 66 x 55



VISIT US ON

